

The Association for Comprehensive Energy Psychology presents the 14th Annual International Energy Psychology Conference

Multiple Dimensions in Psychotherapy & Healing

May 31 - June 3, 2012
Loews Coronado Bay Resort
San Diego, CA

Keynotes

Gary Craig

Founder and Developer of Emotional Freedom Techniques

Amit Goswami, PhD

Theoretical Quantum Physicist and Author

Marilyn Schlitz, PhD

President and CEO of the Institute of Noetic Sciences

Gary Schwartz, PhD

Researcher and Author on EP and Consciousness

Daniel Siegel, MD

Pioneer in the Field of Interpersonal Neurobiology

Invited Presentations

Dan Benor, MD

How Does EP Work? - Wholistic Explanations to Enhance Your Practice

Joanne Callahan

Combining the Power Tools of TFT with Objective Self-Testing to Achieve Optimum Well-Being

Tapas Fleming, LAc

Dogs and Chocolate: When Relationships Feel Like Too Much

Fred Gallo, PhD

Integrating Energy Psychology and Mindfulness

David Gruder, PhD

Hijacking of Happiness and What EP Practitioners Can Do About It

Anodea Judith, PhD

Charge! Another Way to Look at Energy Psychology

May 30-31

Two-Day Introductory EFT Workshop

with Michael De Molina

May 31

Pre-Conference All-Day Workshops

10 one-day intensive seminars with:

Gloria Arenson - Suzanne Connolly - John Diepold - David Feinstein - Roger Jahnke - Anodea Judith - Willem Lammers - Carol Look - Sandra Radomski & Thomas Altaffer - Barbara Stone

Research Half-Day (*Free with Main Conference*)

June 1-3

Main Conference: 45 Workshops in 9 Tracks

Fundamentals of Energy Psychology, Spirituality and Consciousness, Special Populations, Specific Approaches, Integrated Approaches, EP Through the Life Cycle, Peak Performance, Therapist Development, and EP Potpourri

June 4th

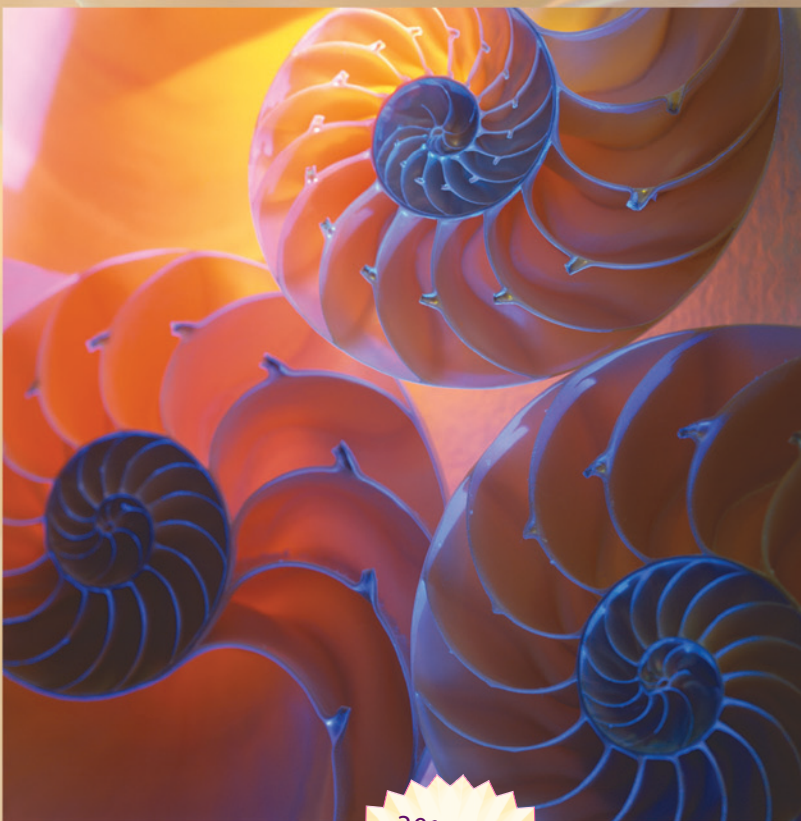
Post-Conference Event: Gary Craig

The Power of Ethical Marketing: Believability Builds Your Business AND Your Reputation

June 4-5

Essential Skills in Comprehensive Energy Psychology Workshop, Level 2

Up to 42.5 CEUs Available



Register by Feb 10 - save up to \$110. Become a member and save even more.

2012 Only! Price includes 3 days of lunch and breakfast!! This is not a typo.

This is the "Super Early Bird" version.

Some slight scheduling changes may occur by conference time.

14th Annual International Energy Psychology Conference

Who should attend?

- Psychologists
- Nurses
- Psychiatrists
- Social Workers
- Physicians
- Marriage & Family Therapists
- Chiropractors
- Energy Medicine Practitioners
- Counselors
- Alternative Health Care Providers
- Acupuncturists & TCM Practitioners
- Educators
- Clergy

The conference is open to anyone interested in their own healing and personal growth.

Table of Contents

Special Events	2
Keynote Presenters	3
Pre-Conference Workshops	4
Invited Presenters.....	5
Breakout Sessions	6-12
Conference at a Glance	8, 9
Post-Conference Events	12
Conference Registration	13
Membership Application.....	14
Donations.....	14
Essential Information	15
Continuing Ed Information	15

The Association for Comprehensive Energy Psychology

is the largest international nonprofit organization, with over 1400 members, promoting professionally responsible energy psychology treatments and collaboration among practitioners, researchers, and licensing bodies. For more information, visit our website at energypsych.org.

– SPECIAL EVENTS –

Wednesday • May 30 and Thursday, May 31 • 9:00am – 5:00pm • 12 CE Credits Two Day Introductory EFT Workshop

Get the training you need from the experts who know in this expanded two day seminar that is the gateway to ACEP's EFT certification program. Learn EFT theory and science, The Basic Recipe, Tell The Story Technique, Personal Peace Procedure and Basic Ethics of EFT with plenty of practice time. This workshop uses an energizing, interactive format to accommodate all learning styles and maximize the instruction. Designed and directed by Tina Craig, this is as close as you are going to get to the original teachings of Gary Craig.



Michael DeMolina, MS, LPC, ACP-EFT, has over twenty years as a psychotherapist and educator. He is the lead ACEP EFT trainer for North America.

Thursday Afternoon • May 31 • 1:00pm - 5:00pm • 4 CE Credits New Research Half-Day

Listen to the most up to date research papers in the field (15 minutes each). In addition, there will be a special keynote by Garret Yount, PhD.

Mind-Body Modalities in the Laboratory

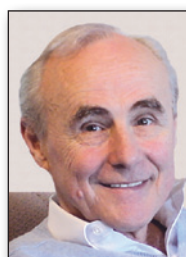
New studies challenge the misconception that mind-body medicine is fundamentally less efficacious than standard medical interventions. Results will be presented from a clinical trial measuring cortisol levels in subjects receiving EFT, and from a study using a body illusion to elicit the stress response. Methodological issues will be discussed that are useful for preemptively meeting the double standard often applied to EP research. (This half-day event is free with full conference tuition.)



Garret Yount, PhD, directs a molecular and cellular biology laboratory at the California Pacific Medical Center Research Institute in San Francisco, focusing primarily on helping people with cancers.

Thursday Evening • May 31 • 7:30pm - 9:30pm A New Psychology: The Ultimate Healing Tool

Walk with me through this new doorway and learn why all the standard books on psychology need to be rewritten. In this engaging 90 minute presentation, I will be introducing a New Psychology that is much more promising than EFT, medicine or anything else this world has to offer. Join with me in this pioneering new concept that blends spirituality with Quantum Physics into a compelling course that is destined to take the healing field in a new direction. Discover that the Ultimate Healing Tool isn't a method or a protocol or something you buy at the pharmacy. It is you.



Gary Craig is founder and developer of Emotional Freedom Techniques (EFT). He is a Stanford engineering graduate and an ordained minister.

This Special Evening Event has a fee of \$30. However it is free if you are attending a pre-conference one-day workshop.

Friday Evening • June 1 • 7:00pm – 11:00pm Friday Night Out on the Town

ACEP has arranged free bus transportation to three locations for Friday evening. Four buses will run circuits from the Loews to the center of Coronado, The Gas Lamp District in San Diego, and Seaport Village.

Saturday Evening • June 2 • 7:30pm – Midnight • \$65 14th Anniversary Gala Dinner: Dinner, Dancing, Live Music, and Surprises

If there is one sure thing to attend at the conference, this is it. You get great food. You get to hang out with your EP buddies. Watch ACEP's first ever Member Performance Show. If you want to perform (3-4 minutes) by playing a song, reading a poem, doing a comedy routine or something else, please contact the office at admin@energypsych.org

And you can shake your energy up dancing to live music with **The Moods**, classic Rock and Roll from the 60's and 70's. We guarantee the dance floor will fill up in ten seconds. Go to the website to find out more: www.energypsych.org.

1.5 CE Credits for Each Keynote

Friday Morning • June 1 • 8:00am – 10:00am



Sensing The Divine: Toward a Science of Enlightenment

In this time of enormous change and complexity, many truth systems are converging that speak to a new model of reality. Science, with all its precision and sophistication, offers new understandings of the physical world. And at the same time, deep truths from the world's religious and spiritual traditions offer insights into our

divine nature. In this presentation, we will explore the breakthroughs that are arising today as these two truth systems interface — revealing new possibilities about our human potential.

Marilyn Mandala Schlitz, PhD, is a clinical research scientist, medical anthropologist, writer, speaker, and thought leader who has pioneered clinical and field-based research in the area of human transformation, consciousness studies, worldview literacy and cultural healing for more than three decades.

Friday Afternoon • June 1 • 5:15pm – 7:00pm



Science of Earthing and Energy Consciousness: Applications to Energy Psychology

All living systems from single celled organisms to plants and animals, and until recently, human beings live electrically connected to the earth. In the 21st century, the vast majority of technologically advanced human beings spend the majority of their time electrically

disconnected from the earth. According to Ober, Chevalier, and their colleagues, sustained separation from the electrical energy of the earth has serious consequences for our physical, psychological, and even spiritual health. Dr. Schwartz will present some of the latest research documenting the powerful healing effects of regular electrical connection to the earth and review its profound implications for energy psychology, human consciousness, and global health.

Gary Schwartz, PhD, is a professor of psychology, medicine, neurology, psychiatry and surgery; and is director of the Laboratory for Advances in Consciousness and Health at the University of Arizona.

Saturday Afternoon • June 2 • 3:00pm – 4:45pm



Quantum Healing in Mind-Body Medicine: Awakening to the Healing Path of Supramental Intelligence

How is psychology related to vital energies that we feel, especially at the chakra points and along meridian lines? In this lecture, quantum physicist Amit Goswami will discuss energy psychology using the insights of recent developments in quantum physics including the biggest question,

“How does energy psychology work given the paradox of dualism?” How to deal with grieving, how to get over depression and find satisfaction in your life, how to transform sexuality into love — all these questions will be addressed. The lecture will cover both intellectual and experiential dimensions.

Amit Goswami, PhD, is a retired professor of physics at the University of Oregon and author of the highly successful textbook *Quantum Mechanics*.

Sunday Afternoon • June 3 • 2:00pm – 3:30pm



Mindfulness, Mindsight and the Brain: What is Mind and Mental Health?

Can we describe a healthy mind?

Interpersonal neurobiology and Dr. Dan Siegel's Mindsight approach defines a core aspect of the mind as an embodied and relational process that regulates the flow of energy and information.

This definition allows us to move deeply into understanding new ways of seeing the interconnections among brain, interpersonal relationships and the mind.

In this presentation, Dr. Siegel will discuss the importance of integration, a central concept in the field interpersonal neurobiology and Mindsight. Defined as the linkage of differentiated components of a system, integration is viewed as the core mechanism in the cultivation of well-being. In an individual's mind, integration involves the connection of separate aspects of mental processes to each other, such as thought with feeling, bodily sensation with logic.

In a relationship, integration entails each person being respected for his or her autonomy and differentiated self while at the same time being linked to others in empathic communication.

For the brain, integration means that separated areas with their unique functions, in the skull and throughout the body, become linked to each other through synaptic connections. These integrated linkages enable more intricate functions to emerge — such as insight, empathy, intuition, and morality.

When integration is present, flexibility, resilience and harmony result; when integration is absent, chaos or rigidity occur. An examination of the DSM (III or IV) reveals pervasive examples of symptoms and syndromes that reflect states of chaos, rigidity, or both. Beyond seeing the DSM in a new light, our discussion will focus on the clinical utility of integration as a central mechanism of health as well as presenting strategies that patients can use to monitor and modify energy and information flow with more clarity and power.

Daniel Siegel, MD, is a clinical professor of psychiatry at the UCLA School of Medicine where he is also on the faculty of the Center for Culture, Brain, and Development and co-director of the Mindful Awareness Research Center at UCLA. www.DrDansiegel.com

Special Appearances by Swami Beyondananda

Swami Beyondananda (cosmic comic alter ego of writer Steve Bhaerman) has been entertaining and enlightening audiences for twenty five years with his comedy disguised as wisdom – or is it wisdom disguised as comedy? Author Marianne Williamson has called him “the Mark Twain of our generation.” Swami is the author of four books, including his latest, *Swami for Precedent: A 7-Step Plan to Heal the Body Politic and Cure Electile Dysfunction*.

His website is www.wakeuplaughing.com



Thursday, May 31, 2012 · 9:00am to 5:00pm • 6 CE Credits

Fee required. Registration is limited. Sign up early to guarantee your place.

Attend one of these events and you can attend the Thursday Evening Keynote for free, a \$30 value!

P1: The Phoenix Effect Process: Basic Training

The Phoenix Effect Process combines a unique imagery technique with focused mindfulness to rapidly eliminate negative emotions, eradicate destructive behaviors and heal relationship difficulties. Requiring minimal personal disclosure, involving no tapping or muscle testing, it works faster than other more complex energy psychology methods. You will experience comprehensive hands-on training.

Gloria Arenson, MFT, DCEP, is past president of ACEP and author of award winning *Five Simple Steps to Emotional Healing*, *How to Stop Playing the Weighting Game*, *Born to Spend*, *Desserts Is Stressed Spelled Backwards*, *Freedom At Your Fingertips*, and *EFT for Procrastination*.

P2: Tricks for Success: Supercharge Your Effectiveness: Blending EP and Traditional Therapies

Sometimes energy psychology is not a stand-alone therapy. The trick is to be spot-on with your EP set-up. Suzanne will demonstrate how Brief Therapy techniques, Ericksonian Hypnotherapy, Cognitive Behavioral Therapy (CBT), Emotionally Focused Therapy (the other EFT), and other time-honored approaches can enhance your chances for success.

Suzanne Connolly, LCSW, LMFT, has presented over 200 workshops worldwide and received consistently excellent evaluations. She is the author of *Thought Field Therapy: Clinical Applications* and co-author of two published Energy Psychology (TFT) research papers. She combines EP techniques with traditional techniques in her private practice.

P3: Heart Assisted Therapy (HAT)

This one-day workshop is an introduction to Heart Assisted Therapy (HAT) and describes the basic clinical skills in using this psychotherapy approach with strong self-regulatory features. Heart Assisted Therapy is the original work of the presenter, which integrates and synthesizes traditional psychotherapy models with EP approaches.

John Diepold Jr, PhD, DCEP, is a licensed psychologist, a member of the APA, and a member of ACEP since its inception. Dr. Diepold is a published author and has presented nationally and internationally on his areas of interest, including workshops on HAT in the USA, Canada, and Europe.

P4: EP with Attachment Issues: Effective Interventions with Couples

Energy psychology provides powerful tools for intervening at critical junctures in marital counseling. Drawing on breakthroughs in attachment-based couple therapy, the residue of formative childhood experiences can be deactivated, internal intimacy models updated, self-regulation abilities enhanced, triggers cleared, and a more effective collaborative alliance formed.

David Feinstein, PhD, DCEP, is a clinical psychologist, and has served on the faculty of The Johns Hopkins University School of Medicine. His books have been translated into fifteen languages and earned eight national awards, including six Golds at U.S. Book News, Nautilus, & Indies competitions.

P5: The Energetics of Anxiety and Depression

The body is our hardware, the mind our software. Just as it takes electricity for the hardware and software to interface within your computer, energy provides the interface between mind and body and functions as their primary means of integration. Freeing the life force energy from the constriction of body armor is one of the central tasks of healing. If the body is blocked, the energy moves through the organism chaotically, as in the case of anxiety disorders, or it might hardly move at all, resulting in depression.

Anodea Judith, PhD, is a somatic therapist, spiritual teacher, and leading authority on the Western application of the chakra system.

P6: Logosynthesis: The Amazing Power of Words

This experiential workshop introduces you to the model, the method, and the worldview behind Logosynthesis® with the help of theory input, specific exercises, and a demonstration. It teaches the day-to-day application of Logosynthesis for self-coaching, guided change, and spiritual development.

Willem Lammers, DPsych, TSTA, is a Swiss/Dutch coach and psychotherapist with over thirty years of experience in the field. Trained in TA, NLP and energy psychology, he developed Logosynthesis as an integrative model for self-coaching, guided change and spiritual development.

P7: Trauma Relief with EFT: A Successful and Systematic Approach to Healing Our Body, Mind, and Spirit

Learn how to identify traumatic events, release the freeze response, and help your clients enjoy peaceful lives by using advanced applications of EFT and energy psychology. Apply EFT protocols to the classic cluster of PTSD symptoms, heal traumas that get trapped in our physiology, and release frozen energetic conflicts that contribute to pain and illness. Whether your clients suffer from family of origin traumas or more recent traumatic incidents, energy psychology is an exceptional healing tool for long-term physical, emotional and spiritual healing.

EFT Master **Carol C. Look, LCSW, DCH**, is a leading voice in the energy psychology field. Author, internationally renowned seminar leader, and internet radio show host, Carol appears as an expert in two DVD documentaries showcasing EFT.

P8: Ask & Receive: Foundations

Ask & Receive is an exciting new technique of personal healing using our own higher states of being to help transform the psychological roots of chronic conditions. We will gently help you learn to heal and understand yourself in a whole new way.

Sandra Radomski, ND, LCSW, is a social worker and a naturopathic doctor. She taught for eight years in the medical school at the University of Wisconsin. She is the creator of Allergy Antidotes as well as co-creator of Ask and Receive.

Thomas Altaffer, MSW, LCSW, a licensed clinical social worker, has extensive training in child and family therapies and Neuro-Linguistic Programming. He has been treating families, couples and children since 1985. He is the creator of the Releasing Technique and co-creator of Ask & Receive.

P9: Healing Past Life Trauma

Unresolved trauma from ancestral wounds or previous incarnations gives clients mysterious phobias and symptoms unresponsive to traditional psychotherapies. Powerful and fast, this Soul Detective Energy Psychology Protocol clears past life trauma without hypnosis, going to the heart of the disturbance and reprogramming for health.

Barbara Stone, PhD, DCEP, is a professor at Energy Medicine University, a bilingual psychotherapist, author of *Invisible Roots: How Healing Past Life Trauma Can Liberate Your Present*, and developer of Soul Detective Protocols. An ACEP certification trainer and consultant, she holds a doctorate in clinical psychology.

P10: Integral Qi Energetics: Six Core Principles and Applied Methods for Professional and Personal Application

Amazing methods from ancient Traditional Chinese Medicine (TCM) and Taoism have been lost in contemporary TCM. Dr. Jahnke has recovered the essence of this lost knowledge that is consistent with recent innovations in EP. Learn six archetypal energy principles that underlie TCM, yoga, and EP, and six practices that you can use in personal and professional interactions. This workshop focuses on practical applications to develop your Qi (energy) sensitivity and clinical treatment skills.

Roger Jahnke, OMD, is among the first Americans to qualify as a Doctor of Chinese Medicine. He has been to China eight times to study "energetics," is the developer of Integral Energetics and author of *The Healer Within* and *The Healing Promise of Qi*.

– INVITED PRESENTERS –

Friday, June 1, 2012 · 2:00pm - 4:45pm

Six presenters total. Conference attendees will be divided into two rooms. Each room will have three speakers who will speak for approximately 45 minutes.

SESSION B1 • 2.5 CE Credits

How Does EP Work? Wholistic Explanations to Enhance Your Practice

EP has an alphabet soup of deeply transformative approaches. Each is rapidly and deeply transformative for habitual perceptions, behaviors, feelings, relationships, and worldviews. Dr. Benor will share his lifetime explorations of healing – through psychology, medicine, psychiatry and CAM therapies. Both right- and left-brain explanations define how EP facilitates wholistic healings of body, emotions, mind, relationships (with people and the environment), and spirit. Dr. Benor will suggest ways to enhance EP interventions through these understandings.

Daniel Benor, MD, a wholistic psychiatric psychotherapist, teaches WHEE, a wholistic hybrid derived from EMDR and EFT, which includes bodymind approaches, spiritual awareness and healing.

Tap Into Self-Empowerment: Combining the Power Tools of TFT

Thought Field Therapy (TFT) was the first of the EP modalities, discovered over thirty years ago. In addition to being delivered by professionals, TFT has been self-applied, with great success and no harm, for three decades. TFT has thirty five proven, specific tapping sequences, and five equally proven power tools to facilitate healing. When TFT is combined with an objective self-testing method, you stand on the leading edge of self-healing and growth, empowering yourself to expand your consciousness and facilitate optimum well-being.

Joanne Callahan, MBA, graduated from UCSB and received her MBA in healthcare administration from CSUSM. She is president of the ATFT Foundation, USA, and a director of the UK ATFT Foundation, leading in humanitarian relief, education, and research with TFT.

Dogs and Chocolate: When Relationships Feel Like Too Much

Ever felt like, "Just give me my dog (or cat) and some good chocolate... and leave me alone"? Do some relationships feel like they're just not worth it – you gave up hope a long time ago – and now you're watching TV or reading about other people's dramas in magazines or online? Learn and experience the first three steps to leaving loneliness behind and having happy, simple relationships with people.

Tapas Fleming, a California Licensed Acupuncturist, created a simple technique (TAT®) that can gently and easily reduce stress, end limiting beliefs, and clear the effects of past stressful experiences. One of the most celebrated leaders in energy psychology, Tapas has taught TAT to hundreds of thousands of people worldwide.

SESSION B2 • 2.5 CE Credits

Integrating Energy Psychology and Mindfulness

Although energy psychology and mindfulness techniques are rooted in mystical ancient traditions, research is offering increasing evidence of the effectiveness of these approaches in treating many psychological and physical conditions. In this informative, lively experiential presentation, Dr. Gallo highlights these findings and offers pointers for integrating these approaches to enhance your clinical practice.

Fred Gallo, PhD, is an energy psychology pioneer and author of numerous articles, manuals, and eight books. He is the author of *Energy Psychology* and co-author of *Energy Tapping*.

The Hijacking of Happiness and What EP Practitioners Can Do About It

Our effectiveness as helping professionals is far more impacted by societal context than our training suggests. A faulty happiness formula was installed in the 1950s that created today's social and economic deterioration. ACEP's first president illuminates the highly potent social engineering strategies that hijacked our happiness, health and prosperity; the ethical and mental health implications this has created; and strategies for using EP to free your clients from this.

David Gruder, PhD, DCEP, psychologist and eight-award-winning author, was ACEP's first president and a CEP certification program co-architect. He speaks, trains, and consults for helping professionals, businesses, and leaders worldwide in integrity, accountability, authenticity, relationship effectiveness, and energy psychology.

Charge! Another Way To Look At EP

Healers of all stripes work with a client's innate charge or life force. For clients with post traumatic stress or high anxiety, dissipating that charge produces noticeable relief. But are there times this may be less appropriate than others? Does everybody carry charge in the same fashion? Can you be overcharged or undercharged? Are we manipulating that charge when we tap it away, disempowering the client's own ability to self-regulate? Learn how to assess the treatment of energy systems in different body types, based on five bioenergetic character structures. You will better assess your clients' needs in regard to energy balancing.

Anodea Judith, PhD, is a somatic therapist, spiritual teacher, and leading authority on the Western application of the chakra system.

The conference is organized into nine tracks. There are four important points to remember: 1) You are NOT required to sign up for a specific track. You can still attend any workshop at the conference. 2) The purpose is to make the many options less overwhelming. 3) You can create a conference experience that is customized to suit your needs. 4) Each track has a number from 1 to 9. In the breakout descriptions you will find each workshop has a letter and a number (e.g. A3). The letter stands for the session time (A is Friday a.m.) and the number stands for the track (#3 stands for Specific Approaches). To view the tracks go to Conference at a Glance (p. 8-9).

If you are new to EP we strongly recommend staying in the Fundamentals track. It is specially designed for clinicians new to EP.

.....
Friday, June 1, 2012
10:30am - 12:30pm

A1: Ideo Motor Cueing: Portal to the Unconscious

Ideo Motor Cueing gives us another perspective on reality through accessing inner wisdom of the body. It is an essential part of the guidance that directs energy psychology techniques deriving from the collaboration between tester and subject and yielding a sense of something outside conscious awareness.

Gregory Nicosia, PhD, DCEP, a licensed psychologist and ACEP past president, founded Advanced Diagnostics, Pittsburgh's premiere center for EP based psychotherapeutic treatment of trauma and cognitive dysfunction. Dr. Nicosia has helped to research, explore and elaborate the newest psychotherapies in the last thirty-five years.

A2: Somatic Genius: Consciousness Technology Emerging through Trauma

Emerging from the study of trauma is an innate genius and body-wisdom that provides a new consciousness technology. These breakthroughs enable the precise mapping of encoded pathology, the emotional reframing and discharge of memory-based physical and emotional pain. Consciousness-based etiology is often revealed.

Brent Baum, SSL, CADC, explores the somatic genius that enables the mapping and resolution of memory-based pathology. Within consciousness resides the wisdom to map, reframe, and discharge the pain of trauma. Our higher holographic nature emerges as we access the genius of the Healer Within.

A3: Introduction to Pranic Healing

Pranic Healing is a simple, powerful, no-touch energy healing system that uses prana to accelerate physical/psychological healing. Participants will learn to feel prana, scan biofields, assess emotion and cognition on the biofield, apply self-healing techniques, and review research in Pranic Healing.

Mary Clark, PhD, DCEP, LMFT, is a senior certified pranic healer and instructor. Past coordinator of the pranic healing certification program, she maintains a pranic healing and psychotherapy practice, runs free healing clinics, and is adjunct faculty at the California Institute for Human Science.

A4: Integrating Quantum Energy Principles with EP Through Investigation of Internal Family Systems

Explore how the latest science of quantum principles can help you overcome stumbling blocks in your EP practice in a very practical way. You will learn to integrate specific universal principles to enhance efficacy of treatment as illustrated through the Internal Family Systems therapy model.

Benita Silver, MA, LCMHC, is a certified IFS psychotherapist and a nationally registered art therapist and has practiced in Conway NH for 28 years. Benita is on the board of directors of the Evergreen Institute for Wellness.

Yuliya Cohen, ERT, BACS, TDCE, is a medical intuitive, healer, ERT therapist and researcher. Formerly an engineer and computer scientist, she is a founder of The Energy Restructuring Institute, regular contributor to Quantum Health Journal and author of *The New Paradigm for Effortless Healing*.

A5: Awakening The Sacred Energy Body: Integrating Tibetan Practice and EP Principles

This workshop introduces the principles of energy pathways in the Tibetan Bön lineage, and integrates the ancient practices with modern energy psychology protocol. Through breath and movement meditation, participants access the healing vibration of pure awareness to transform negative emotions and mental blockages.

B. Raven Lee, PhD, LCSW, DCEP, is a Jungian psychotherapist, Tibetan meditation teacher, and shaman healer. She integrates interpersonal neurobiology, clinical hypnotherapy, Reiki, energy psychology, and dreamwork into her private practice and presentations, which specialize in mind/body healing, spirituality, trauma and soul fragmentation.

A6: Be Resourced: Strengthening Qualities of Self

With a dynamic visualization process you will develop and strengthen positive qualities of Self, which foster self-esteem. We will utilize EP to clear blocks to this development, to more fully integrate the learnings and have the opportunity to create a drawing representing your personal experience.

Patricia Thatcher, MSW, has over twenty-five years of experience specializing in mind/body methods, including the Tapas Acupressure Technique®, Thought Field Therapy, EMDR, the REMAP Process, and hypnosis in her work with adults, children, couples and families dealing with stress & trauma related issues.

A7: Energy Breathing: Two New, Simple and Powerful Techniques

Learn two new, simple, flexible, and powerful techniques with multiple applications. Stimulating the lung meridian alarm point allows the natural rhythm of the breath to discharge the stress inherent in any thought field. Use internal eye movements to create energy breathing.

Phil Mollon, PhD, DCEP, is a clinical psychologist and psychoanalyst from England. He teaches energy psychology widely in the UK and is the developer of Psychoanalytic Energy Psychotherapy [PEP]. He serves on the Board of ACEP.

A8: How to Use EFT for Preverbal Issues (Trauma, Unmet Needs, and Imprinted Patterns)

Preverbal experiences establish our core life patterns. Too often we are left with unmet needs, and traumatic or life diminishing imprints that cascade into life-long difficulties. This workshop helps practitioners more effectively identify, assess and work with preverbal patterns at any age using EFT.

Wendy Anne McCarty, PhD, DCEP, is a leader in the frontier to optimize human potential at the beginning of life. The co-founder/faculty of graduate programs in prenatal & perinatal psychology, she authored *Welcoming Consciousness*. Her leading-edge work brings together prenatal and perinatal psychology, integrated early development, consciousness studies, and EP healing modalities.

A9: Pain Relief with EFT: Release the Energy of Pain and Return to Peak Performance

Physical pain drains our emotional, financial and spiritual resources. With energy psychology methods such as EFT, we have seen dramatic and impressive relief of stubborn symptoms. Learn how to apply EFT to pain syndromes, symptoms and complications, and enjoy more comfort, peace and relief.

Carol Look, LCSW, EFT Master, is a pioneer and leading voice in the energy psychology field. She is a highly sought after success and abundance coach and worldwide seminar leader. Carol authored the popular book, *Attracting Abundance with EFT*, and is featured in two major documentaries.

*For nurses, professional counselors, MFTs, social workers, drug and alcohol counselors, and some psychologists (see p. 15): All breakout sessions are eligible for 2.0 Continuing Education credits except for C7, D4, E4, E5, F6, and F7

.....
 Saturday, June 2, 2012
 8:30am - 10:30am

C1: Identifying and Treating Systemic Energetic Interferences

In this interactive session you'll learn to identify and treat systemic energetic interferences which can frequently cause impediments to client progress. These interferences may also impede client readiness for dealing with specific problems and prevent EP treatments from bringing about lasting effects causing client/practitioner frustration and discouragement.

Dorothea Hover-Kramer, EdD, DCEP, is co-founder and past president of ACEP and a key developer of its certification program. She is a psychotherapist and the author of eight books about energy therapies including *Second Chance at Your Dream*.

C2: The Rapid Healing of PTSD: How Energy Psychology Changes the Brain

Energy psychology has been bringing unprecedented healing and relief to those suffering with severe PTSD. Reviewing and building upon the presenter's well-received keynote at the 2010 ACEP in Orlando, this lively presentation will show what happens in the brain during EP treatments of PTSD.

David Feinstein, PhD, DCEP, a clinical psychologist, has served on the faculty of The Johns Hopkins University School of Medicine. His books have been translated into fifteen languages and earned eight national awards, including six Golds at US Book News, Nautilus, and Indies competitions.

C3: Prime Energy Activation and Transcendence (PEAT): An Introduction

Synthesizing traditional Eastern and European spiritual practices and EP, Serbian psychologist Zivorad Slavinski created a system of practices to transcend dualistic consciousness. This overview of Prime Energy Activation and Transcendence (PEAT) includes an experiential introduction and hands-on demonstration of his work.

John Fitch III, MFA, has worked in the communication field as a scholar and a professional since 1990, specializing in video and film production and sound design. His latest research is focused on reducing communication apprehension through a combination of digital technology and energy psychology.

Judith Daniel, MEd, LMFT, is a facilitator for the EMDR Institute. She has served on EMDR training teams in Bangladesh, Sri Lanka, Palestine, and Indonesia, and has formal training in EDxTM and TFT. She was trained by Zivorad Slavinski in the PEAT processes and is the only approved trainer of PEAT trainers in the US.

C4: The Synergy of Integrating Thought Field Therapy and Emotional Freedom Techniques

Thought Field Therapy and Emotional Freedom Techniques are the two most frequently used EP treatment models. Each has evolved, widening the differences between the two. EFT can be more effective by using applied kinesiology to assess and treat psychological reversals and neutralize energy toxins, and by stimulating the gamut acupoint and 9-gamut procedure. TFT efficacy is enhanced by using the structure of EFT affirmations when treating psychological reversals, which then involve the brain's language centers and minimize the apex problem.

Robert Pasahow, PhD, is a licensed psychologist, ACEP member, and EFT and TFT therapist. He is the only member of both ACEP's and TFT's research committees. He has published on TFT for pain, vertigo, and tinnitus, and promotes insight regarding EP toxins.

C5: Healing Soul Fragmentation with Energy Psychology

Soul fragmentation and soul loss has been described throughout recorded time, especially after a battle or trauma. Subjective and objective clinical reports describe the same phenomena of an emptiness inside, or missing a part of one's self. Through lecture and videotaped example we will discuss the process of reconnecting and re-integrating soul fragments with EP.

Mary Sise, LCSW, DCEP, is a past president of ACEP and the co-author of the book *The Energy of Belief: Psychology's Power Tools to Focus Intention and Release Blocking Beliefs*.

C6: Who Has to Believe What to Be Better? Beliefs and Intention in EP Explored and Expanded

A safe and stimulating opportunity to consider how years of practice shaped our perception, beliefs, and actions. Share and grow in your own way from the body of wisdom created by these experiences. Examine the ethical use of the power of EP.

Robert Bray, PhD, LCSW, CTS, TFT-VT, has a private practice specializing in traumatic stress and consults and teaches TFT at all levels.

C7: Body Balance, Neural Communication, Human Energy and Well Being*

Does the human body's balance system affect sense of well being? Learn how you can improve your balance and improve how you feel. See how simple energy interventions can affect your balance and how broad sensory inputs can quiet the mind and improve balance.

Jim Klopman is an ACEP executive committee member and the ACEP treasurer. He recently invented the SlackBow, a Dynamic Athletic Balance training device.

C8: Save the Males: Using Energy Therapies to Heal Five Critical Problems Men Face Today

An engaging look into the world of men's health and the critical problems facing men today. Learn about male-type depression, irritable male syndrome, male menopause, breadwinner stress, and how to survive and thrive in a stressed-out world using energy healing power tools.

Jed Diamond, PhD, LCSW, is an internationally recognized leader in the field of men's health. He has written ten books including the best-seller, *Surviving Male Menopause*. His new book, *MenAlive: Combating Stress without Talk Therapy or Drugs Using the Revolutionary Tools of Energy Healing*, was recently published.

C9: Look Ma, It's Easy! Single Subject Case Studies for Clinicians

Single Subject Design Studies are a form of research that clinicians are doing in their own offices. Learn how to conduct case studies, analyze results, and get published. Help advance the field of EP and become a better clinician by learning to conduct SSD studies.

John Freedom, CEHP, is a practitioner of EFT, TFT, TAT, and ETC. He is a long-time student of consciousness and the healing arts. He serves on the board of directors and as chairman of ACEP's research committee, and teaches EFT and ETC throughout the US and Europe.

Gregory Nicosia, PhD, DCEP, is a licensed psychologist, ACEP past president, and founded Advanced Diagnostics, Pittsburgh's premiere center for EP based psychotherapeutic treatment of trauma and cognitive dysfunction. Dr. Nicosia has helped to research, explore and elaborate the newest psychotherapies in the last thirty-five years.

.....
 Saturday, June 2, 2012
 11:00am - 1:00pm

D1: What's a Psychological Reversal and Why Should I Care?

Many clients lack full inner permission to make the changes they want. The common EP term for this phenomenon is psychological reversal. This presentation shows you powerful strategies for supercharging your clients' success by identifying and intervening with their PRs. Includes demonstration and practicum.

Lynn Karjala, PhD, DCEP, specializes in trauma treatment. She is trained in hypnosis, AIT, EFT, TAT, and BSFF and has published two books. Before becoming a clinician, she taught graduate and undergraduate courses on life-span development and the psychology of death and dying.

Email questions: admin@energypsych.org

Session descriptions continue on page 10.

– CONFERENCE AT A GLANCE –

* No CE Credit for starred sessions

1 Fundamentals of Energy Psychology

Basic training in the principles and practice of EP

2 Specific Populations

Focuses on the application of energy approaches to specific types of problems or goals

3 Specific Approaches

Focuses on the theory or application of specific EP approaches

4 Integrated Approaches to Energy Psychology

Focuses on principles of the energetic role of consciousness and spiritual practice

Thursday, May 31

Morning Pre-con ~ 9:00am – 12:15pm • Afternoon Pre-con ~ 1:00pm – 5:00pm ~ New Research Half-Day (Free with Evening Event ~ 7:30pm – 9:30pm ~ A New Psychology: The Ultimate Healing Tool ~ Gary Craig ~ \$30 (Free with

Friday, June 1

**Complimentary Breakfast ~ 7:00am – 8:00am
*Early Morning Wake-up Sessions ~ 7:00am – 7:40am ~ Sunrise Yoga - Jennifer Closshey • Emoto-Calisthenics! ~ Morning Keynote ~ 8:00am – 10:00am ~ Sensing The Divine: Toward a Science of Enlightenment ~ Marilyn Manda**

**Session A
FRIDAY
MORNING
WORKSHOPS
10:30AM – 12:30PM**

Ideomotor Cueing:
Portal to the Unconscious
Gregory J. Nicosia, PhD, DCEP

Somatic Genius:
Consciousness Technology
Emerging through Trauma
Brent Baum, SSL, CADC

Introduction to
Pranic Healing
Mary Clark, PhD, DCEP, LMFT

Integrating Quantum Energy
Principles through Investigation
of Internal Family Systems
*Benita Silver, MA, LCMHC
Yuliya Cohen, ERT, BACS, TDCE*

Complementary Lunch ~ 12:30pm – 1:45pm

**Invited Presenters
FRIDAY
AFTERNOON
2:00PM – 4:45PM**

SESSION B1

*How Does EP Work? Wholistic Explanations to Enhance Your Practice ~ Daniel Benor, MD
Tap Into Self-Empowerment: Combining the Power Tools of TFT ~ Joanne Callahan, MBA
Dogs and Chocolate: When Relationships Feel Like Too Much ~ Tapas Fleming*

**Keynote ~ 5:15pm – 7:00pm ~ Science of Earthing and Energy Consciousness: Applications to Energy Psychology
Night on the Town ~ 7:00pm -11:00pm**

Saturday, June 2

**Complimentary Breakfast ~ 7:00am – 8:00am
*Early Morning Wake-up Sessions ~ 7:00am – 7:40am ~ Sunrise Yoga - Jennifer Closshey • Emoto-Calisthenics! ~ General Meeting ~ 8:00am – 8:20am**

**Session C
SATURDAY
EARLY MORNING
WORKSHOPS
8:30AM – 10:30AM**

Identifying and Treating
Systemic Energetic Interferences
Dorothea Hover-Kramer, EdD, DCEP

The Rapid Healing of PTSD:
How Energy Psychology Changes the Brain
David Feinstein, PhD, DCEP

Prime Energy Activation
and Transcendence (PEAT):
An Introduction*
*John Fitch III, MFA
Judith Daniel, MEd, LMFT*

The Synergy of Integrating
Thought Field Therapy and
Emotional Freedom Techniques
Robert Pasahow, PhD

**Session D
SATURDAY
LATE MORNING
WORKSHOPS
11:00AM – 1:00PM**

What's a Psychological Reversal
and Why Should I Care?
Lynn Karjala, PhD, DCEP

Logosynthesis:
The Amazing Power
of Words
Willem Lammers, DPsych, TSTA

Allergy Antidotes
Made Easy
Sandi Radomski, ND, LCSW

Energy Psychology
and the
Multidimensional Model*
Debra Greene, PhD

Lunch/General Meeting ~ 1:00pm – 2:45pm

**Keynote ~ 3:00pm – 4:45pm ~ Quantum Healing in Mind-Body Medicine: Awakening to the Healing Path of Supr
Evening Event ~ 7:30pm – 12:00pm ~ Gala Banquet ~ \$65**

Sunday, June 3

**Complimentary Breakfast ~ 7:00am – 8:00am
*Early Morning Wake-up Sessions ~ 7:00am – 7:40am ~ Sunrise Yoga - Jennifer Closshey**

**Session E
SUNDAY
EARLY MORNING
WORKSHOPS
8:00AM – 10:00AM**

First Steps Toward
Mastering the Chakras
*Stephanie Eldringhoff,
MA, DCEP, LMFT*

Energetic Interventions in the
Treatment of Binge Eating Disorder
and Compulsive Overeating
Meryl Beck, LPCC

Multi-Dimensional
Aspects of Transforming
Overeating
Beth Rontal, LICSW

The Transformational
Power of Humor*
Steve Bhaerman

**Session F
SUNDAY
LATE MORNING
WORKSHOPS
10:30AM – 12:30PM**

Orientation to
Chinese Meridians in EP
Patricia Butler, MA

The Art of Relapse Prevention
in the Addicted Brain using
Energy Psychology
Grier Cundill, MA, DCEP

Using Dreams and the
Imaginal Field to Speed
Target Treatment with AIT
Linda Goranson, PhD, LCPC, DCEP

Advanced Energetics
in Clinical Settings
Mary Jo Bulbrook, EdD

Complementary Lunch ~ 12:30pm – 1:45pm

Closing Keynote ~ 2:00pm – 3:30pm ~ Mindfulness, Mindsight and the Brain: What is Mind and Mental Health? ~ Closing Ceremony ~ 3:30pm – 3:45pm

ABOUT THE TRACK SYSTEM: • You are NOT required to sign up for a specific track. • You can still attend any workshop at the conference. • The purpose is to make the

– THURSDAY, MAY 31 - SUNDAY, JUNE 3 –

5	6	7	8	9
Spirituality and Consciousness	Developing the Practitioner	EP and Peak Performance	Energy Psychology Through the Life Cycle	Potpourri of Energy Psychology
Integrates different EP approaches, as well as other therapeutic approaches	Integrating the findings of science & research with theory & clinical practice to create a solid framework for practice	Focuses on the application of EP for peak performance	Focuses on using EP at different phases of life	A mixture of great EP workshops

(with full conference tuition)
(a pre-conference one-day workshop)

~ John Freedom
~ La Schlitz, PhD

Awakening The Sacred Energy Body: Integrating Tibetan Practice and EP Principles <i>B. Raven Lee, PhD, LCSW, DCEP</i>	Be Resourced: Strengthening Qualities of Self <i>Patricia Thatcher, MSW</i>	Energy Breathing: Two New, Simple and Powerful Techniques <i>Phil Mollon, PhD, DCEP</i>	How to Use EFT for Preverbal Issues (Trauma, Unmet Needs, and Imprinted Patterns) <i>Wendy Anne McCarty, PhD, DCEP</i>	Pain Relief with EFT: Release the Energy of Pain and Return to Peak Performance <i>Carol Look, LCSW, EFT Master</i>
--	--	--	---	--

SESSION B2
Integrating Energy Psychology and Mindfulness ~ Fred Gallo, PhD
The Hijacking of Happiness and What EP Practitioners Can Do About It ~ David Gruder, PhD, DCEP
Charge! Another Way To Look At EP ~ Anodea Judith, PhD

~ Gary Schwartz, PhD

~ John Freedom

Healing Soul Fragmentation with Energy Psychology <i>Mary Sise, LCSW, DCEP</i>	Who Has to Believe What to Be Better? Beliefs and Intention in EP Explored and Expanded <i>Robert Bray, PhD, LCSW, CTS, TFT-VT</i>	Body Balance, Neural Communication, Human Energy and Well Being* <i>Jim Klopman</i>	Save the Males: Using Energy Therapies to Heal Five Critical Problems Men Face Today <i>Jed Diamond, PhD, LCSW</i>	Look Ma, It's Easy! Single Subject Case Studies for Clinicians <i>Gregory Nicosia, PhD, DCEP</i> <i>John Freedom, CEHP</i>
The Orbits of Life, Medicine's Glimpse of the Divine <i>Ted Cibik, DP, DMQ</i>	Essential Self-Care for Caregivers and Helpers with EP Techniques <i>Howard Brockman, LCSW, DCEP</i>	The Energy Makeover: Creating Results for Successful Over-Achievers <i>Betsy Muller, MBA, CEHP</i> <i>Robert Schwarz, PsyD, DCEP</i>	Integrative EP Approaches for Recovering from Loss <i>Sherry Lynn O'Brian, LCSW, DCEP</i>	Ethics in EP: How to Have a Legally Sound and Ethical Practice <i>Midge Murphy, JD, PhD</i>

~ Fundamental Intelligence ~ Amit Goswami, PhD

Remembrance of the Earth's Sacred Alchemy: Archetypal Wisdoms for 2012* <i>Gaisheda Kheawok</i> <i>Catherine Chater, MSc</i>	Qigong for Self-cultivation: Daily practices for EP practitioners <i>Larry Stoler, PhD</i>	Group Energies: From Mesmer to ACEP and the Red Sox <i>Eric (Rick) Leskowitz, MD, ABHM</i>	Revolutionize Relationship Counseling with the Phoenix Effect Process <i>Gloria Arenson, MFT, DCEP</i>	Darkness into Light <i>Barbara E Stone, PhD, DCEP</i>
Healing Ourselves and Our World with Heart Resonance Using EFT and the Grace Process <i>Lori Leyden, PhD, MBA</i>	Energy Hygiene: Caring for the Caregiver* <i>Jill Leigh</i>	Learn the Missing Link in Inner Peak Performance Using EP with Advanced Questioning Techniques* <i>Mats Ulda and Bitta Wiese</i>	Releasing Technique: Using the Power of Love to Heal <i>Thomas Altaffer, LCSW</i> <i>Pamela Altaffer, LCSW</i>	The Emergence of Homo Luminous: 2012: Metapsychology and Your Practice <i>Holly Timberlake, PhD, DCEP</i>

~ Daniel Siegel, MD

With many options less overwhelming. • You can create a conference experience that is customized to suit your needs. • Some workshops fit more than one track.

D2: Logosynthesis: The Amazing Power of Words

Logosynthesis® is a new model and treatment method in psychotherapy and coaching, based on the power of words as an energetic principle of change. This workshop presents a theory introduction and practical exercises as well as a video or live demonstration.

Willem Lammers, DPsych, TSTA, is a Swiss psychotherapist, a supervisor and a consultant to organizations with over twenty-five years of experience in the field. Trained in transactional analysis, NLP, EMDR and EP, he developed Logosynthesis and teaches this amazing new model around the world.

D3: Allergy Antidotes Made Easy

Allergy Antidotes is a comprehensive system to identify and treat the underlying emotional components that contribute to substance sensitivities. Using newer technology, Allergy Antidotes is now even easier and more accessible. Learn Spinal Release, Laser Spray and Ask & Receive for reactions.

Sandi Radomski, ND, LCSW, is a social worker and a naturopathic doctor. She taught for eight years in the medical school at the University of Wisconsin. She is the creator of Allergy Antidotes as well as co-creator of Ask & Receive.

D4: Energy Psychology and the Multidimensional Model*

Have you ever wondered how to explain to a client what you do and how it works? Come explore Tiller's multidimensional model. We'll go behind the scenes and get interactive with the model to experience the transformative energies and their effects.

Debra Greene, PhD, is an innovator in the field of mind-body medicine with clients worldwide. Author of the acclaimed book, *Endless Energy: The Essential Guide to Energy Health*, she has lectured extensively, worked with thousands of clients, and taught hundreds of workshops.

D5: The Orbits of Life, Medicine's Glimpse of the Divine

The deepest and arguably the most profound orbits of being are those of the Ren, the Du, and the Chong. This lecture will discuss these orbits, where and how they flow, what points they cross in human anatomy, and how they affect all acupoints.

Ted Cibik, DP, DMQ, is considered an international expert in medical QiGong, Qigong for health, internal martial arts including Taijichuan, and Chinese medicine. Dr. Cibik's counsel has been requested by the National Institutes of Health on stress management and exercise science specializing in QiGong.

D6: Essential Self-Care for Care-givers and Helpers with EP Techniques

This presentation is for therapists, counselors, caregivers and helpers. Many are drawn to the helping professions yet often are not taught awareness techniques and energetic strategies for self-care. Learn how to prevent compassion fatigue and absorption of psychotoxic energies with EP.

Howard Brockman, LCSW, DCEP, is a psychotherapist in private practice with over thirty years of clinical experience. He is a Diplomate in Clinical Social Work and ACEP. Howard has presented numerous times at the International EP Conferences as well as at ISSSEEM.

D7: The Energy Makeover: Creating Results for Successful Over-Achievers

Start an EP revolution - work with successful people! High-achievers want fast results and are motivated to reach new heights. Learn three quick balancing techniques that serve up results. Release your own blocks with exercises that work for the most common concerns reported by high-achievers.

Betsy Muller, MBA, CEHP, is a coach and author who has helped thousands of people discover their full potential through conscious self-care. In addition to an MBA and over thirty years of business experience, Ms Muller is a certified energy coach, energy health practitioner, EFT practitioner and non-denominational minister.

Robert Schwarz, PsyD, DCEP, is the Executive Director of ACEP. He is an author of three books and has spent years helping high functioning people improve their performance using EP and other techniques.

D8: Integrative EP Approaches for Recovering from Loss

Whether you have lost a loved one, a marriage, or a job, the energy of grief often weighs heavily upon one's heart, making it difficult to enjoy life after a loss. Learn integrative EP techniques to transcend the energy of grief and loss.

Sherry Lynn O'Brian, LCSW, DCEP, is the sole proprietor of Mind/Body/Spirit Inner-grations, specializing in personal growth and transformation; chronic illness; and grief/loss issues. She is certified in CEP, EFT, advanced clinical hypnotherapy, Psych-K™, bereavement counseling, and guided imagery.

D9: Ethics in EP: How to Have a Legally Sound and Ethical Practice

This lively interactive workshop is designed to address the ethical, legal, and regulatory issues applicable to practitioners of energy based methods. You will learn valuable risk management tools and be provided with practical advice on how to have a legally sound and ethical practice. Bring your questions and concerns!

Midge Murphy, JD, PhD, is the first attorney to receive her PhD in energy medicine. Although she no longer practices law, she combines her unique talents by providing services as a professional liability risk management consultant specializing in ethics and legal issues in the practice of and training in energy therapies

.....
Sunday, June 3, 2012

8:00am - 10am

E1: First Steps in Mastering the Chakras

For many beginning EP practitioners, the chakra system seems mysterious and complicated to treat. This presentation offers a lively, engaging introduction to the chakras. Several simple methods of chakra balancing will be demonstrated, as well as ways to make these methods even more effective.

Stephanie Eldringhoff, MA, DCEP, LMFT, has specialized in EP since 1993 in her Bellevue, WA practice. She is a consultant and co-trainer candidate for ACEP's CEP certification program, former faculty for Eden Energy Medicine, and co-developer of the *Emotional First-Aid Kit*.

E2: Energetic Interventions in the Treatment of Binge Eating Disorder and Compulsive Overeating

Compulsive overeaters/binge eaters tend to have low life-force energy and stuff themselves in an attempt to feel revitalized. This workshop teaches ways to monitor energy levels and utilize alternatives to food in order to feel energized and achieve a more natural high.

Meryl Beck, LPCC, has presented at international conferences and has been featured on radio and television. Her book *Stop Eating Your Heart Out: The 21-Day Program to Free Yourself from Emotional Eating*, combines her personal and professional knowledge of eating disorders.

E3: Multi-Dimensional Aspects of Transforming Overeating

An interactive and dynamic overview of a multi-dimensional group model addressing core issues and negative beliefs related to overeating; processing difficult emotions connected to weight and poor body image; reducing cravings and bingeing; and developing the internal resources to make healthy and liberating choices.

Beth Rontal, LICSW, is a Certified Professional in Tapas Acupressure Technique and trained in Internal Family Systems. She is a clinical supervisor at Community Services Institute and maintains a private practice in West Roxbury, MA, specializing in binge-eating, body image anxiety and depression.

Exhibit space and mini talks are available.

Contact admin@energypsych.org for a prospectus.

Phone: 619-861-2237

Fax: 1-484-418-1019

Email: admin@energypsych.org

E4: The Transformational Power of Humor*

Learn how to use the tools of cosmic comedy to humor yourself and others, and turn the material of the material world into heart-opening laughter and mind-expanding insight. You'll laugh while you learn, and learn while you laugh.

Steve Bhaerman is an internationally known author and humorist, better known as his comic alter ego Swami Beyondananda. On the "serious" side, he is co-author (with Bruce Lipton) of *Spontaneous Evolution: Our Positive Future and a Way to Get There From Here*.

E5: Remembrance of the Earth's Sacred Alchemy: Archetypal Wisdoms for 2012*

The archetypal wisdom of the divine feminine/masculine are gateways to the sacred marriage from within. Journey into the alchemical realms of the Earth to open these portals, learning practical shamanic tools to seek the divine feminine/masculine within via the inner landscape of the soul.

Gaisheda Kheawok is a Peace Elder, Medicine Person, honoured member of the Seneca Wolf Clan. She is the founder and executive director of the Whispering Song School of Energy Medicine where she has been teaching and practicing as a shamanic facilitator for over twenty-five years.

Catherine Chater, MSc, has studied with Tribal Elder Gaisheda Kheawok for over eight years and is a graduate of the Whispering Song School of Energy Medicine apprenticeship and mentorship programs. She is a member of the Whispering Song Healing Guild.

E6: Qigong for Self-cultivation: Daily practices for EP Practitioners

Treatment success in energy therapies is directly connected to the practitioner's energy level. In this fun experiential workshop, you will learn several Qigong practices that can improve your energy, help you overcome life challenges, and help you be a more effective EP practitioner.

Larry Stoler, PhD, is a past president of ACEP. He practices at WholeHealth Chicago, a center for Integrative Medicine. A life-long student of healing and healers, he is a certified Tao of Medical Qigong practitioner under the guidance of Master Nan Lu.

"This was my first ACEP conference, I am so glad I came. I have a years' worth of material to study and share with clients."

Meg Connor, Keene, NH

E7: Group Energies: From Mesmer to ACEP and the Red Sox

EP goes mainstream, as Mesmer and the Red Sox combine to help us understand the intangibles in sports and in life. The weird science of group energies also explains why ACEP meetings are such fun - it's a sneak preview of the 2012 PBS broadcast.

Eric (Rick) Leskowitz, MD, ABHM, directs the Integrative Medicine Project at Spaulding Rehabilitation Hospital and is on the faculty at Harvard Medical School. His documentary film entitled *The Joy of Sox: Weird Science and the Power of Intention* has been accepted for broadcast on PBS.

E8: Revolutionize Relationship Counseling with the Phoenix Effect Process

The Phoenix Effect Process combines a simple imagery technique with focused mindfulness to rapidly eliminate the negative beliefs and emotions that create unhappy relationships. Transform relationships without talking or tapping. Eliminate the over-and-over quarrels. Experience loving interactions effortlessly by coaching each other.

Gloria Arenson, MFT, DCEP, past president of ACEP, is author of the award winning *How to Stop Playing the Weighting Game, Born to Spend, Five Simple Steps to Emotional Healing, Desserts Is Stressed Spelled Backwards, Freedom At Your Fingertips*, and *EFT For Procrastination*.

E9: Darkness into Light

Sometimes sets of negative life beliefs seem to constellate as fallen angels, blocking a person's path at every opportunity. Learn a Soul Detective protocol to examine these detrimental programs, transform them into beneficial energy, and repair the energetic wound which allowed them to enter.

Barbara E Stone, PhD, DCEP, is a professor at Energy Medicine University, a bilingual psychotherapist, an ACEP certification trainer and consultant, and author of *Invisible Roots: How Healing Past Life Trauma Can Liberate Your Present* (2008). Also a musician, gardener, and grandmother, she holds a doctorate in clinical psychology from Pacifica Graduate Institute.

Sunday, June 3, 2012
10:30am - 12:30pm

F1: Orientation to Chinese Meridians in EP

Of the many components that comprise our energy anatomy, it's the meridian system that first caught the attention of curious westerners, and it's this system that is most widely used by EP practitioners. Learn about these fascinating pathways, how to trace them, and how they link with our emotions and our health.

Patricia Butler, MA, is a licensed mental health counselor in Orlando, FL who provides counseling for the staff at Orlando Health, a multi-hospital system in Central Florida. She is certified in energy psychology (Diplomate, Comprehensive Energy Psychology) and energy medicine (Eden Energy Medicine – Advanced Practitioner), and has been studying, practicing, and teaching energy therapies since 1998.

F2: The Art of Relapse Prevention in the Addicted Brain using Energy Psychology

The presenter will illustrate how the addicted brain manifests itself and how this brain is almost inevitably prone to relapse even with excellent, initial treatment. Lights on and off; connections made and broken! Practical methodologies will demonstrate how such seeming inevitabilities can be interrupted.

Grier Cundill, MA, DCEP, is an addictions and relapse prevention counselor. For eleven years, he facilitated outpatient programs in hospital-based settings and has been in private practice for the past twelve years.

F3: Using Dreams and the Imaginal Field to Speed Target Treatment with AIT

Using dreams and the imaginal field, which might be considered as a waking dream, is an important part of Advanced Integrative Therapy, helping therapist and client zoom in to target issues that need urgent attention. Becoming aware of archetypal fields can enhance your performance efficiency and bring a new level of awareness to your work in the "field."

Linda Goranson, PhD, LCPC, DCEP, has studied with Dr. Asha Clinton, the developer of Advanced Integrative Therapy® and is an AIT trainer. She is a Jungian-oriented therapist with a private practice in Evanston, Illinois.

Conference Bookstore, Exhibits, & Audio Recordings

Browse our well stocked book store and exhibits where you can see, experience and purchase various tools, essential oils, and books recommended by our presenters.

- Explore an extensive selection of books and tapes related to EP available for sale.
- Discover a wide range of products and services targeted toward EP practitioners.

We are offering a full set of MP3 recordings of the conference at an incredible price of \$199. You will be able to download or stream these high quality digital recordings from our new web learning center anytime you wish. A full CD set is also available for \$219, which includes shipping and handling.

"I found this conference to be transformative for myself as a healer and for my clients."

Sara Berger Edmonton, Canada

Session descriptions continue on page 12.

F4: Advanced Energetics in Clinical Settings

Explore the role of EP, EM, and EK in client care, demonstrating whole person learning based on Virginia Satir's process, using multi-dimensional healing interventions such as drawing and advanced spiritual/medical intuition to complement a mental or physical health practice.

Mary Jo Bulbrook, EdD, director of the graduate complementary medicine program at Akamai University and original faculty in the Virginia Satir training program, is a medical/spiritual intuitive with thirty-five years of international experience in teaching advanced EP, EM, and EK.

F5: Healing Ourselves and Our World with Heart Resonance Using EFT and the Grace Process

Expand your therapeutic options, skill in transcending blockages, and open to higher vibrational healing energies. Learn how these practices benefit humanitarian work with orphan genocide survivors in Rwanda and the World's First International Youth Healing Center based on energy psychology.

Lori Leyden, PhD, MBA, facilitates healing work internationally with The Grace Process. She is the founder of Create Global Healing, a non-profit corporation committed to developing heart-centered healing and leadership programs for traumatized youth, US students, and humanitarians.

F6: Energy Hygiene: Caring for the Caregiver*

EP is as helpful for therapists as it is for patients. Join us to learn energy hygiene skills that will keep your own energy system on track and unstuck, by clearly defining your energetic boundaries and keeping the therapeutic workspace clean and invigorating.

Jill Leigh is the director of the Energy Healing Institute in Boston. Her school and practice offer allopathic and alternative practitioners energy medicine tools and practices. Leigh is currently developing advanced curriculum for certified students at EHI and writing a book on energy self-care for practitioners and therapists.

F7: Learn the Missing Link in Inner Peak Performance Using EP with Advanced Questioning Techniques*

You will learn an easy-to-use way to master the missing link in all cognitive strategies on how to become the best you can be. You will now be able to quickly find the root cause of what's stopping peak performance.

Mats Uldal, Master Simplified TFT with AQT, has been a mental trainer for top athletes and peak performance trainer for more than thirty-five years and has educated more than 1500 people in five countries through Mats Uldal International School of TFT (MUIS). He has developed Simplified TFT with Advanced Questioning Techniques.

Bitta Wiese is a leading instructor at Mats Uldal International School of TFT (MUIS) and a registered Thought Field Therapist, advanced level, MNLH. She is also the co-founder and CEO of Mats Uldal Humanitarian Foundation.

F8: Releasing Technique: Using the Power of Love to Heal

Dissociation is the root cause of all limiting emotions and beliefs. Because of dissociation, we have allowed ourselves to become less than our true selves. Releasing Technique provides the key to finding those lost parts of ourselves, releasing the fear which holds them separate and allowing us to let go of our limitations around money, relationships, health and joy.

Thomas Altaffer, LCSW, a licensed clinical social worker, has extensive training in child and family therapies and neuro-linguistic programming. He is the creator of the Releasing Technique and co-creator of Ask & Receive. He has been treating families, couples and children since 1985.

Pamela Altaffer, LCSW, has been a psychotherapist for over twenty-five years. She has a private

practice with her husband. She has been utilizing EP for about fifteen years and has extensive training in family therapy. She is also a certified InterPlay leader.

F9: The Emergence of Homo Luminous: 2012, Meta-psychology and Your Practice

Transformation of consciousness, dimensions of being, becoming homo luminous, changes in 2012! Pretty heady stuff! This presentation brings these exciting and timely topics together through physics, psychology, wisdom traditions and more for a lens into a more expanded metapsychology and for methods that could help you help your clients and yourself in this time of evolutionary change.

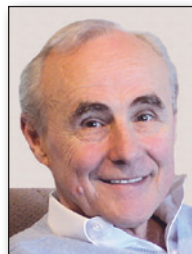
Holly Timberlake, PhD, DCEP, is a psychologist, philosopher, and visionary, at home in the current expansion of our experience of reality. She facilitates groups and retreats, and is the creator of three holistic and energy-based healing blogs and over forty transformative meditational podcasts.

– POST CONFERENCE –

Monday, June 4, 2012 • 9:00am – 5:00pm • No CE Credit

The Power of Ethical Marketing Believability Builds Your Business AND Your Reputation

Believability is far more persuasive than the clever hype that has intruded into the EFT world. It is a refreshing echo of the truth, and commands special attention because it stands out like a flower in a field of weeds. Subconsciously, it is the number one feature customers are seeking... and they are having a hard time finding it. Learn how to make your promotions (and yourself) more believable so you can (1) attract new clients with whom you have instant rapport, (2) bring those clients back for repeat business, and (3) generate more quality referrals than you can handle.



Gary Craig is founder and developer of Emotional Freedom Techniques (EFT). He is a Stanford engineering graduate and an ordained minister.

Monday & Tuesday, June 4 & 5 • 9:00am – 5:00pm both days • 12 CE Credits

Essential Skills in Comprehensive Energy Psychology - LEVEL 2

This training program is LEVEL 2 OF A TWO PART SERIES. You must have taken Level 1 to attend this workshop. Nearby Level 1 workshops are being offered in the following locations and dates: Feb 25-26 Pasadena; March 3-4 San Diego; March 10-11 Santa Barbra. (go to www.energypsych.org for details and other dates and locations around the country.)



The CEP series is designed to help attendees understand EP within an overall perspective of sound science, practical application, and ethical consideration. The term "comprehensive" refers to the fact that attendees will have an array of tools that they can use to customize treatment to the specific needs of each client. Furthermore, they will have a framework that allows them to integrate those tools within an overall psychotherapeutic framework. This workshop also prepares helping professionals wishing to become part of ACEP's Certification Program in Comprehensive Energy Psychology.



Barbara Stone is a workshop presenter, bilingual psychotherapist, and professor at Energy Medicine University, a distance learning opportunity. Her newest book, *Invisible Roots: How Healing Past Life Trauma Can Liberate Your Present*, won the Book News USA award for the best book of 2008 in the category of health.

Mary Hammond, MA, LPC, DCEP, is a therapist, trainer, consultant, and author from Oregon who, for over twenty years, has assisted people in finding their truths and healing their illnesses.

– 2012 CONFERENCE REGISTRATION –

WEB REGISTRATION STRONGLY ENCOURAGED – FOR MAIL OR FAX PLEASE PRINT VERY NEATLY – FEES ARE IN US \$ ONLY

Name _____ Credential _____
 Address _____
 City _____ State/Province _____ Zip/Postal Code _____
 Country _____ E-mail _____
 Phone _____ Fax _____

First Conference? Yes No
Member? Yes No
To be eligible for the member registration fee, you must be a current Association member through June 2012.
Group Code _____
Mailing Code (from label) _____

1. Main Conference Registration (June 1-3) Please check one category

Registrations must be postmarked, faxed or web registered by dates indicated, without exception, to receive discounted rates. All registrations received after 5pm Eastern Time on May 4th will be processed as on-site registration at the on-site rate. (Fees are in US \$ only)

On the web or postmarked by date:	Super Early Bird Pricing By Feb 10	By Mar 23	By May 4	After May 4
Main Conference (Fri-Sun) - Member	<input type="checkbox"/> \$425	<input type="checkbox"/> \$485	<input type="checkbox"/> \$535	<input type="checkbox"/> \$585
Main Conference (Fri-Sun) - Non-Member	<input type="checkbox"/> \$495	<input type="checkbox"/> \$555	<input type="checkbox"/> \$605	<input type="checkbox"/> \$655
Main Conference (Fri-Sun) - Full Time Student*	<input type="checkbox"/> \$255	<input type="checkbox"/> \$270	<input type="checkbox"/> \$290	<input type="checkbox"/> \$315
Two Day (Fri & Sat) - Member	<input type="checkbox"/> \$335	<input type="checkbox"/> \$375	<input type="checkbox"/> \$415	<input type="checkbox"/> \$455
Two Day (Sat & Sun) - Member	<input type="checkbox"/> \$335	<input type="checkbox"/> \$375	<input type="checkbox"/> \$415	<input type="checkbox"/> \$455
Two Day (Fri & Sat) - Non Member	<input type="checkbox"/> \$395	<input type="checkbox"/> \$435	<input type="checkbox"/> \$475	<input type="checkbox"/> \$515
Two Day (Sat & Sun) - Non Member	<input type="checkbox"/> \$395	<input type="checkbox"/> \$435	<input type="checkbox"/> \$475	<input type="checkbox"/> \$515
Two Day (Fri & Sat) - Full Time Student*	<input type="checkbox"/> \$205	<input type="checkbox"/> \$220	<input type="checkbox"/> \$240	<input type="checkbox"/> \$260
Two Day (Sat & Sun) - Full Time Student*	<input type="checkbox"/> \$205	<input type="checkbox"/> \$220	<input type="checkbox"/> \$240	<input type="checkbox"/> \$260

* Must be full time college or graduate student. Registration must be accompanied by a copy of student ID card.
 • **Group Discounts for Main Conference Registration Only:** 10% discount for groups of 3-4; 15% discount for groups of 5-9; 20% discount for groups of 10 or more. Call 619-861-2237 or email to admin@energypsych.org to receive your group discount code PRIOR TO submitting registrations.

2. Pre-Conference Workshops (May 30 & 31) 6 CE credits per day • (Fees are in US \$ only)

On the web or postmarked by date:	Super Early Bird Pricing By Feb 10	By Mar 23	By May 4	After May 4
One Day Pre-con Seminars - Member	<input type="checkbox"/> \$155	<input type="checkbox"/> \$175	<input type="checkbox"/> \$195	<input type="checkbox"/> \$215
One Day Pre-con Seminars - Non-Member	<input type="checkbox"/> \$175	<input type="checkbox"/> \$195	<input type="checkbox"/> \$215	<input type="checkbox"/> \$235
Two Day EFT Pre-con Seminar - Member	<input type="checkbox"/> \$300	<input type="checkbox"/> \$325	<input type="checkbox"/> \$350	<input type="checkbox"/> \$375
Two Day EFT Pre-con Seminar - Non-Member	<input type="checkbox"/> \$340	<input type="checkbox"/> \$365	<input type="checkbox"/> \$390	<input type="checkbox"/> \$415
Research Half Day Only - Member**	<input type="checkbox"/> \$95	<input type="checkbox"/> \$110	<input type="checkbox"/> \$125	<input type="checkbox"/> \$140
Research Half Day Only - Non-Member**	<input type="checkbox"/> \$115	<input type="checkbox"/> \$130	<input type="checkbox"/> \$150	<input type="checkbox"/> \$165
<i>** Research Only is free with Full Conference registration.</i>				
One Day Pre-con Seminars - FT Student*	<input type="checkbox"/> \$80	<input type="checkbox"/> \$100	<input type="checkbox"/> \$120	<input type="checkbox"/> \$140
Two Day EFT Pre-con Seminars - FT Student*	<input type="checkbox"/> \$170	<input type="checkbox"/> \$200	<input type="checkbox"/> \$240	<input type="checkbox"/> \$270

* Must be full time college or graduate student. Registration must be accompanied by a copy of student ID
 Pre-conference registration includes a free admission to Thursday evening event (a \$30 value), do not check this event in the Special Events Section.

- | | |
|---|--|
| <input type="checkbox"/> P1 The Phoenix Effect Process | <input type="checkbox"/> P6 Logosynthesis |
| <input type="checkbox"/> P2 Tricks for Success: Supercharge Effectiveness-Blending EP/Traditional | <input type="checkbox"/> P7 Trauma Relief W/EFT |
| <input type="checkbox"/> P3 Heart Assisted Therapy (HAT) | <input type="checkbox"/> P8 Ask & Receive: Foundations |
| <input type="checkbox"/> P4 EP with Attachment Issues | <input type="checkbox"/> P9 Healing Past Life Trauma |
| <input type="checkbox"/> P5 The Energetics of Anxiety and Depression | <input type="checkbox"/> P10 Integral Qi Energetics |
| | <input type="checkbox"/> P11 Research Half-Day |

3. Audio Set of Entire Conference

Pre-order a full set of audio MP3 recordings of all available sessions with your "Full Conference" registration and save \$350. (A \$549 value if purchased after the conference.)
 MP3 Set – \$199 Full set of CDs – \$219

4. Post-Conference Events (June 4 & 5)

	MEMBER				NON MEMBER				STUDENT*			
	By 2/10	By 3/23	By 5/4	After 5/4	By 2/10	By 3/23	By 5/4	After 5/4	By 2/10	By 3/23	By 5/4	After 5/4
June 4, 9am - 5pm: Gary Craig	\$155	\$175	\$195	\$215	\$175	\$195	\$215	\$235	\$80	\$100	\$110	\$120
June 4 & 5: Essential Skills/CEP Level 2 - 2 day wkshp		\$325	\$350	\$375		\$365	\$390	\$415		\$200	\$240	\$270

* Copy of valid, full time graduate student ID must accompany registration.

5. Special Events

- \$30 *A New Psychology: Ultimate Healing Tool* (Craig) Thursday Evening, 7:30pm – 9:30pm
- \$65 *14th Annual Anniversary Celebration Dinner* Saturday Evening, 7:30pm – Midnight
- Vegetarian Beef Chicken

6. Registration Fees Total & Payment Information

- Payment must accompany your registration form • *Only US dollars will be accepted on checks*
- All non US members will be charged US equivalent at time the credit card is processed
- **Only Mail, Fax or On-Line Registrations Accepted**

\$ _____ Total Registration Fee for the Main Conference
 \$ _____ Less Group Discount
 \$ _____ SUBTOTAL
 \$ _____ Total Fee for Pre-conference Workshops
 \$ _____ Full Audio Set
 \$ _____ Total Fees for Post-conference Events
 \$ _____ Total Fees for Special Events
 \$ _____ **GRAND TOTAL**

Enclosed is my check payable to Association for Comprehensive Energy Psychology in the amount of \$ _____ (Registration from outside the US must be in the form of a credit card)

Charge \$ _____ to the following credit card:
 VISA MasterCard (Sorry, American Express not accepted)

Card # _____

Expiration Date _____ Security Code _____

Name as appears on card _____

Credit Card Billing Address _____

Signature _____

7. Please Indicate Any Special Needs

Dietary: Diabetic Vegetarian High protein Vegan Gluten Free Shellfish Allergies
 Other (please explain): _____

Physical: _____ Please check here if you require special accommodations in order to participate in the conference, and fax a written description of your needs (484) 418-1019.

8. Cancellation/Refund Policy

- Cancel Before April 1: Full Refund. • Between April 1 and May 1: Refund minus a processing fee of \$50.
- After May 1: No refunds

ACEP policy on grievances pertaining to educational programs: If you have a grievance related to any workshop issue, please contact Executive Director Robert Schwarz at (619) 861-ACEP(2237) or email acep_ed@energypsych.org

Register Online at www.energypsych.org • On-line registration is strongly encouraged.
 Mail or Fax registrations to: ACEP Business Office, 233 E Lancaster Ave., Suite 104, Ardmore, PA 19003, USA
 Phone: 619-861-2237 • Fax: 1-484-418-1019 • Questions via E-Mail: admin@energypsych.org

Once your conference registration form is received and processed, you will receive a confirmation letter by US mail or by e-mail if e-mail address is provided. Please allow 3 weeks for processing.

For Internal Use Only:
 Date Received _____
 Amt. Received _____
 Notes _____

– JOIN NOW! MEMBERSHIP APPLICATION –

Name: _____ Suffix: _____ Date: _____
Organization: _____ Website: _____
Street Address: _____
City: _____ State/Province: _____ Zip/Postal Code: _____ Country: _____
Business Phone: _____ E-mail Address: _____ Home Phone: _____
Highest Degree Earned: _____ Degree Granting Institution: _____
Primary Profession: _____ Licensure: _____ State: _____
Certifications and Credentials: _____
Energy Psychology Modalities Currently Practiced: _____

- I agree to abide by the Association's Code of Ethics.
Signature: _____
- Yes No: I would like the above information to be made available on the Association's website membership directory.
- Yes No: I would like to be on the Association's email list to receive the latest info about EP.

2012 Dues

- Regular Member:** Licensed mental health professionals or the international equivalent engaged in the treatment of emotional distress by employing methods of energy psychology or allied helping professionals engaged in facilitating personal, relationship or leadership development or peak performance through employing methods of energy psychology. (US \$95/yr.)
- Associate Member:** Those (a) persons employed by educational institutions or governmental agencies whose career direction is not primarily that of practicing EP methods; (b) individuals formerly holding regular membership who no longer qualify for such membership; (c) persons representing a firm or corporation engaged in selling products or services to members of the Association; or (d) any person with a demonstrated commitment to supporting the goals of the Association and who does not qualify for regular membership. (US \$95/yr.)
- International 1 Member:** Rates are for residents of the following countries: Australia, Canada, European Union, Japan, Hong Kong, Singapore, South Africa) (US \$76/yr.)
- Student Member:** Full-time students pursuing advanced degrees in health care field at accredited colleges or universities and not engaged in a profession employing the practice of energy psychology. (US \$45/yr.)

Tax Deductible Donations \$ _____

The Association for Comprehensive Energy Psychology is a non-profit corporation. (IRS tax ID #33-0832999)

- Association's Highest Priorities Humanitarian Aid Research

Become Active!

Our organization depends in large part on the support of volunteers inspired by our vision and goals. Membership on a committee is a great way to make new friends and build professional alliances. Please check your preferences:

- Humanitarian Regional Activities Conference
 Membership Fundraising Communications

Amount of Payment \$ _____

- Check Enclosed, payable to Association for Comprehensive Energy Psychology
 VISA MasterCard

Account # _____

Expires: Month _____ Year _____ Code _____

Signature _____

Register online or mail your completed application and payment to:
The Association for Comprehensive Energy Psychology
233 E Lancaster Ave., Suite 104, Ardmore, PA 19003 USA

Applicants from outside the United States must use a credit card.

JOIN NOW!

Joining the Association for Comprehensive Energy Psychology can advance your career and benefit you personally. Join us and be part of this fast growing movement that is changing peoples' lives around the world. Energy psychology is for everyone, so of course, we welcome you. Register online for the conference and become a member at the same time. It's easy. When you start the conference registration process you will have the option to join and then continue with your conference registration.

The Home for Energy Psychology

The Association for Comprehensive Energy Psychology is a nonprofit organization with a global mission. The Association promotes research and training in Comprehensive Energy Psychology and provides education for professionals and the public. We support humanitarian relief efforts to reduce the impact of trauma. Our members include mental health and other health care practitioners as well as educators, business coaches and laypeople.

Our Mission and Objectives

The Association for Comprehensive Energy Psychology is dedicated to the research, education and promotion of Energy Psychology to establish its credibility and effectiveness among all health-related professions. We work toward achieving this mission by:

- Serving as a central resource by providing the latest developments in research and groundbreaking discoveries through our website, newsletter and conferences.
- Sponsoring regional and international conferences about Energy Psychology to help expand awareness of this field among healing professionals and the lay community.
- Providing Continuing Education credits for licensed professionals.
- Conducting and/or financially sponsoring research that documents the validity and efficacy of these methods.
- Identifying and overseeing standards of care and ethical guidelines for professionals who incorporate Energy Psychology modalities in their work.
- Fostering the development and implementation of a competency-based program of study leading to credentialing in Energy Psychology and a program for maintaining credentials.
- Supporting the dissemination of these methods among under-served populations worldwide through our Humanitarian Committee.

Member Benefits

- Up to \$140 discount on the annual conference,
- Up to \$200 off fees for certification in Energy Psychology
- Discounts on other EP programs and events
- Listing in Web based Energy Psychology Therapist Locator
- Posting your EP related Workshops on the website
- Free Teleconferences
- Discounts on Journals and other programs

For further information:

Phone: 619-861-ACEP (2237)

Fax: 1-484-418-1019

Website: www.energypsych.org

E-Mail: admin@energypsych.org

Continuing Education Credits

Up to 42.5 Hours Available

For the overall conference CE objective go to:

<https://m360.energypsych.org/event.aspx?eventID=33234>

CE credit is available for: nurses • professional counselors • Imfts • social workers • drug & alcohol counselors • psychologists * licensed in Arizona, Nevada, Florida, North Carolina, South Carolina, Georgia and Virginia.

The Association for Comprehensive Energy Psychology is a nationally approved provider for the:

- Association of Social Work Boards (ASWB, 1048),
- National Board of Certified Counselors (NBCC, 5868),
- National Association of Alcohol and Drug Abuse Counselors (NAADAC, 368).

The Association for Comprehensive Energy Psychology is an approved provider of continuing education (PCE2536) for the California Board of Behavioral Sciences (BBS) for California LMFTs and LCSWs. Presentations designated for CE meet the qualifications for CE credit for MFTs and LCSWs as required by the BBS.

The Association for Comprehensive Energy Psychology is an approved provider for the California Board of Registered Nursing (Provider #14626).

The Association for Comprehensive Energy Psychology has applied to the Florida Board of Clinical Social Work, Marriage and Family Therapy and Mental Health Counseling for CE credit.

***Arizona Psychologists:** This conference appears to meet the criteria for category II of CE credit for psychologists.

***Florida Psychologists:** According to Florida regulation 64B19.13.003 (1)(i) "Continuing psychological education credit will be granted for Florida Psychologists for CE courses approved by any Board within the Division of Medical Quality Assurance of the Department of Health, provided that such courses enhance the psychological skills and/or psychological knowledge of the licensee." We expect this conference will meet this requirement. (See above i.e. Florida Board of Clinical Social Work, Marriage and Family Therapy and Mental Health Counseling)

***Georgia Psychologists:** GA psychologists can claim CEUs for our conference under Category II (Conventions) at the rate of 3 CEUs per conference day. They can claim CEUs for EP workshops under Category III (Workshops/ Institutes) as long as the workshop meets the 3-hour minimum (i.e. pre or post conference seminars)

***Nevada Psychologists:** This conference appears to meet the criteria NAC 641.136 for CE credit for psychologists.

***North Carolina Psychologists:** According to their published regulations the conference meets criteria for category B CE credit.

***South Carolina Psychologists:** According to their published regulations, the conference meets criteria for category B CE credit, and may meet category A criteria.

***Virginia Psychologists:** According to their published regulations, because the conference is accepted by Florida Boards, it will accept the conference for CE.

*Disclaimer: ACEP has attempted to provide the most accurate information available. ACEP cannot guarantee the actions of individual state psychology boards or how they will interpret their own regulations in terms of accepting CE credits for the 14th International Energy Psychology Conference, nor have we checked every state board. Below is a link that will allow you to find the regulations of each psychology state board. We recommend that you check your own regulations, as well as contacting your own boards to confirm this information.

<http://www.ceunit.com/psychologistsstateboards.htm>

Attention Students

Special discounts are offered for full time college or graduate students with official identification, and **one year free Association membership is included with your conference registration.**

Tuition Information

Main Conference Tuition includes:

- Four stellar keynotes with introductions from *Swami Beyondanada*
- A choice of forty-five breakout sessions
- Six invited presenters
- Continental breakfast each day
- Membership luncheon (Saturday), plus two additional complimentary lunches!
- Special track for newcomers to EP
- Morning warm-up activities
- Access to exhibits and conference bookstore
- Special events and networking events
- Friday Night out on the town
- 18.5 CE credits (plus up to an additional 24 CE credits for pre- and post-conference events)



Group Discounts

For Main Conference Registration Only

10% discount for groups of three or four, 15% discount for groups of five to nine, 20% discount for ten or more. To receive your group discount code call or e-mail PRIOR TO submitting registrations. Call 619-861-2237. Email to admin@energypsych.org

Hotel Info

Loews Coronado Bay Resort

4000 Coronado Bay Rd., Coronado, CA 92118

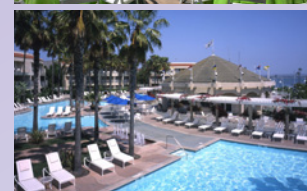
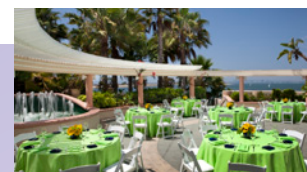
www.loewshotels.com/en/Coronado-Bay-Resort

Group rate: \$149 • 800-815-6397
Book online at energypsych.org

The Loews Coronado Bay Resort is a phenomenal 4 star, 4 diamond resort situated in the seaside community of Coronado. The hotel is surrounded by water, with almost every room offering water views of its private marina, the Pacific Ocean, Coronado Bay Bridge, or the San Diego skyline. The beauty and airiness of this property contributes to the overall energy of the conference. Loews is known for its great food, and this property is the home of the entire chain's executive chef. 2010 attendees raved about this resort.

The property is approximately four miles from downtown Coronado and twelve miles from the San Diego airport. ACEP has negotiated an outrageous room rate of \$149 per night! Reservations: 800-815-6397.

How can we offer three lunches? The hotel is providing two free lunches to compensate for the fact that the hotel's main lobby may still be under renovation during our event. The renovation began in January and is scheduled for completion June 8. Everything may be open before we get there, but if not, the lobby will be sectioned off and there will be a covered walkway to take you to the sleeping rooms. The good news is that it's beautiful in San Diego overlooking the bay in June. Sleeping rooms, conference rooms, and all other areas are not affected by the renovation. We are very pleased with this arrangement and think you will be as well. You still get the lunches even if the lobby is open!!



acep

Association for Comprehensive
Energy Psychology

233 E Lancaster Ave., Suite 104
Ardmore, PA 19003 USA

14th International
Energy Psychology Conference

May 31 - June 3, 2012

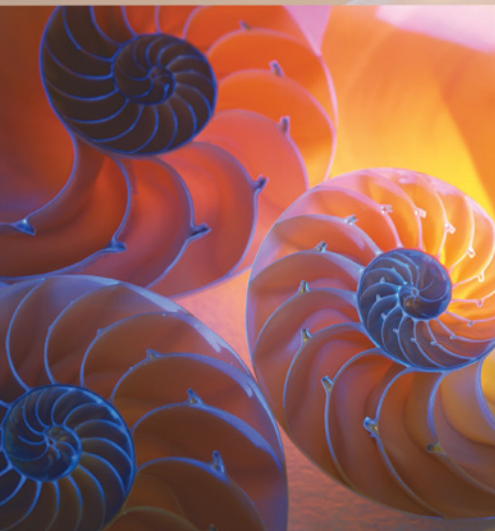
Loews Coronado Bay Resort
San Diego, CA

This is the
"Super Early Bird"
version.
Some slight scheduling
changes may occur by
conference time.

The earlier
you register,
the more you save!
Details on
page 13

The Association for Comprehensive Energy Psychology presents the
14th Annual International Energy Psychology Conference

Multiple Dimensions in Psychotherapy & Healing



What is Energy Psychology (EP)?

Based on an integration of quantum physics, psychology, Eastern medicine, and spirituality, EP posits that psychological problems are a reflection of disturbed bio-energetic patterns. EP methods help clients learn tools to directly influence these patterns.

Clients learn skills to self-regulate, rapidly reducing symptoms of stress, anxiety, anger, trauma, guilt, shame, and depression. The mind-body connection involves a two-way communication system modulated by the energy pathways and centers of the body. EP utilizes these energy pathways while working with disturbances in thought and emotion to more rapidly and thoroughly effect change.

EP provides tools to quickly assess unconscious beliefs and resistances, release limiting beliefs and blocked emotions, promote readiness to change, and strengthen positive attitudes.

What can this conference do for you? *You can*.....

- 1) Learn powerful tools to improve the functioning and well-being of your clients
- 2) Reduce or eliminate dependency on low fee managed care contracts
- 3) Develop a specialty niche in the \$57 billion complementary and alternative health care market
- 4) Initiate and deepen your skills in cutting edge methods for change
- 5) Renew and reinvigorate your own energy and balance
- 6) Initiate, strengthen and master practices that integrate mind, heart, body and spirit
- 7) Network and strengthen relationships with like-minded professionals